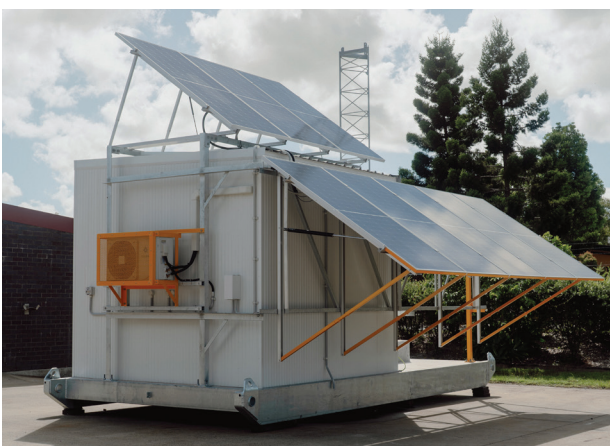


Remote Deployment Unit RDU-S10

The RDU-S10 is a rapidly deployable self-contained skid with an integrated communication shelter, solar panels, and a 10 m free standing mast capable of supplying autonomous power ideal for off-grid remote locations.

The compact sealed shelter contains one communication rack and one battery rack. The skid also includes eight integrated roof-mounted folding solar panels and a 10 m free-standing mast, ensuring reliable equipment mounting and optimal signal coverage. Remote monitoring capabilities enable real-time tracking and alerts, allowing for proactive maintenance and system oversight.

The integrated DC air conditioning system maintains battery temperature, ensuring long-term performance and extended lifespan. The unit is designed for harsh environments, with a sealed access door to protect critical components. Optional pressurisation prevents dust ingress, maintaining system reliability in challenging conditions.



FEATURES

- ✓ The integrated 3.1 m x 3.0 m shelter includes two full height comms racks and battery racks.
- ✓ 10 m free standing mast.
- ✓ 8 x solar panels on folding arms.
- ✓ Diesel generator integration for continuous power.
- ✓ Sealed access door, with optional positive pressurisation.
- ✓ Optional security and fire systems.

Technical specifications

FEATURE	DESCRIPTION
Dimensions (skid shelter)	Skid H:3400 mm W:3150 mm L:6550 mm Shelter H:2800 mm W:3050 mm L:3150mm
Weight	17,000 kg approx.
Wall construction material	Coolroom panel or HDG steel framed wall clad with Lysaght Panelrib® XRW
External & internal finish	Colorbond® "Surfmist"
Flooring	Solid concrete with Class R9 minimum, heavy duty vinyl floor covering (AS 4586)
Roof	Skillion type with Colorbond® flashing and rain canopy
Air conditioning	48 VDC split system air-con
Access door	1 x personal access entry door with stainless steel door hardware
Communication rack	1 x 42 RU 600 x 800mm Rittal TS-IT cabinet
Battery rack	1 x 42 RU 600 x 800mm Rittal TS-IT cabinet
Installed solar array angle	8 x 540 W bifacial modules Fixed (20-45 degrees)
Solar regulator	Victron MPPT 250/85
Battery equipment voltage	51.2 V DC 12 V, 24 V, 48 V
Battery capacity	Up to 16 x 78 Ah Lithium Ferro Phosphate (LiFePO4)
Battery autonomy	Typically, 3-5 days depending on average load
Battery design life	10 years
Remote communication	Victron VRM
Fire detection & protection	Basic: 2 x Photo-optical detectors integrated with Victron Cerbo GX Advanced: Notifier AFP-3030 or FS-1600 Fire suppression available on request
Compliance standards	AS3084, AS3000, AS3008, AS3015, AS1170, AS3600, AS4100, AS/CA S009

About us

ART designs, manufactures, installs, and maintains turnkey infrastructure solutions for wind resource assessments, as well as for the broader renewables, resources and communications industries.

art-group.com.au

ART

P (02) 6672 6200

E sales@art-group.com.au

ART-FOR-067.005 RDU-S 10m_v2